

17th STORM Dutch Senior Open 2024



Oil Pattern Distance: 42 Feet **Reverse Brush Drop:** 42 Feet **Oil Per Board:** 50 uL
Forward Oil Total: 12.65 mL **Reverse Oil Total:** 15 mL **Volume Oil Total:** 27.65 mL
Forward Boards Crossed: 253 Boards **Reverse Boards Crossed:** 300 Boards **Total Boards Crossed:** 553 Boards

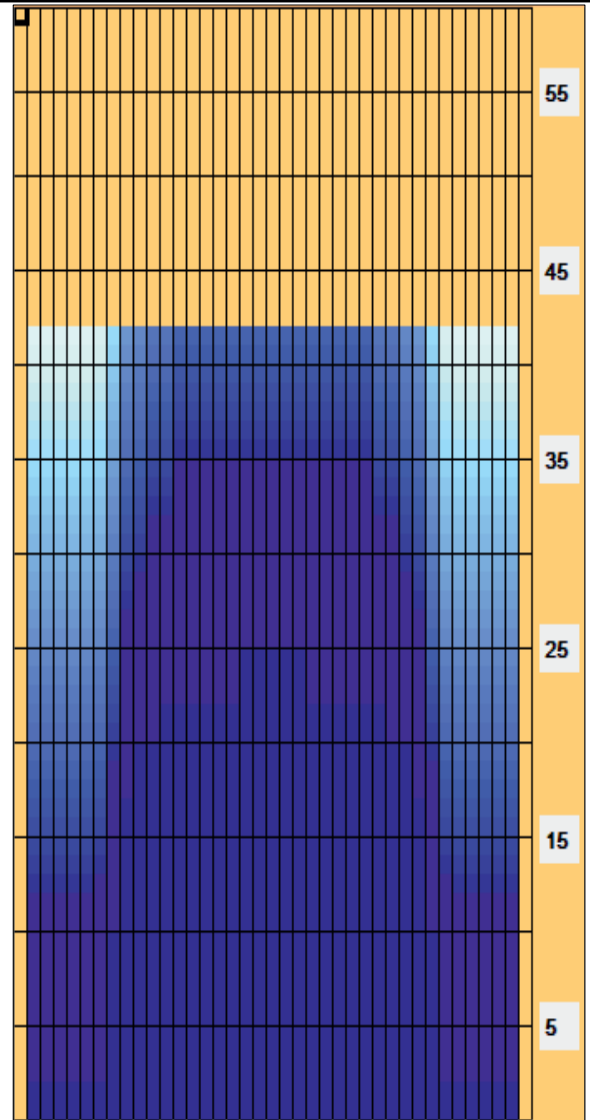
	Start	Stop	Loads	Speed	Crossed	Start	End	Feet	T.Oil
1	6L	6R	1	18	29	0.0	0.0	0.0	1450
2	2L	2R	1	18	37	0.0	2.5	2.5	1850
3	8L	8R	3	18	75	2.5	10.1	7.6	3750
4	9L	9R	3	18	69	10.1	17.7	7.6	3450
5	10L	10R	1	18	21	17.7	20.2	2.5	1050
6	12L	12R	1	18	17	20.2	22.7	2.5	850
7	18L	18R	1	22	5	22.7	25.8	3.1	250
8	2L	2R	0	22	0	25.8	39.0	13.2	0
9	2L	2R	0	26	0	39.0	42.0	3.0	0

	Start	Stop	Loads	Speed	Crossed	Start	End	Feet	T.Oil
1	2L	2R	0	30	0	42.0	35.0	-7.0	0
2	13L	13R	1	22	15	35.0	31.9	-3.1	750
3	11L	11R	1	18	19	31.9	29.4	-2.5	950
4	10L	10R	1	18	21	29.4	26.9	-2.5	1050
5	9L	9R	3	18	69	26.9	19.3	-7.6	3450
6	8L	8R	3	14	75	19.3	13.4	-5.9	3750
7	7L	7R	1	14	27	13.4	11.5	-1.9	1350
8	2L	2R	2	14	74	11.5	7.6	-3.9	3700
9	2L	2R	0	14	0	7.6	0.0	-7.6	0

Conditioner:
 Type In or Select One

TransferType:
 Type In or Select One

- Forward
- Reverse
- Combined
- Buff



Item	3L-7L:18L-18R	8L-12L:18L-18R	13L-17L:18L-18R	18L-18R:17R-13R	18L-18R:12R-8R	18L-18R:7R-3R
Description	Outside Track:Middle	Middle Track:Middle	Inside Track:Middle	Middle: Inside Track	Middle:Middle Track	Middle:Outside Track
Track Zone Ratio	6.39	1.31	1.05	1.05	1.31	6.39

